

Appendix A: Selected Regional Results

Question 005. In general terms, do you think the state is headed in the right direction?

	Region						Total
	1	2	3	4	5	6	
Yes	51.3%	54.5%	67.3%	60.5%	66.1%	70.9%	63.6%
No	31.9%	33.3%	24.3%	31.6%	26.8%	15.5%	26.2%
Don't Know	15.7%	12.2%	7.3%	7.8%	7.2%	13.6%	9.7%
Refused	1.0%	0.0%	0.7%	0.0%	0.0%	0.0%	0.5%

Question 010. In your opinion, what is the most important issue facing Idaho today?

	Region						Total
	1	2	3	4	5	6	
Economy	18.1%	34.5%	12.0%	14.7%	28.1%	16.4%	17.3%
Education	18.5%	22.0%	27.5%	19.1%	17.8%	34.8%	24.6%
Environment	4.2%	6.6%	2.2%	13.3%	5.8%	2.5%	4.6%
Growth	10.3%	3.4%	17.2%	2.0%	2.2%	8.5%	10.6%
Social Issues	5.1%	3.0%	7.3%	6.7%	8.7%	4.5%	6.4%
Drought or water	0.0%	2.7%	1.5%	16.5%	7.3%	3.9%	4.1%
Health Care	4.6%	4.3%	0.4%	5.0%	1.4%	0.5%	2.0%
Taxes	11.0%	3.3%	8.8%	1.8%	9.4%	9.2%	7.9%
Politics	1.8%	1.3%	1.1%	0.2%	0.3%	0.1%	2.1%
Agriculture	0.0%	0.0%	1.5%	1.9%	3.3%	0.0%	1.2%
Other	18.1%	10.6%	14.7%	9.5%	6.2%	13.7%	13.2%
Don't Know	8.3%	8.3%	4.4%	8.3%	6.4%	5.3%	6.1%
Refused	0.0%	0.0%	0.0%	0.0%	0.3%	0.0%	0.0%

Question 015A. How important is it to you that the governor and legislature deal with public school funding in the next year?

	Region						Total
	1	2	3	4	5	6	
Extremely Important	50.9%	49.1%	36.8%	54.0%	48.9%	51.5%	45.0%
Very Important	27.6%	35.7%	33.5%	31.6%	41.6%	25.3%	32.5%
Moderately Important	16.2%	6.6%	21.2%	7.3%	5.5%	14.4%	15.1%
Not That Important	5.3%	7.3%	8.1%	5.9%	3.7%	8.8%	7.0%
Don't Know	0.0%	1.3%	0.4%	1.2%	0.3%	0.0%	0.4%

17th Annual Idaho Public Policy Survey
Appendix A: Selected Regional Results

Question 015B. How important is it to you that the governor and legislature deal with higher education funding in the next year?

	Region						Total
	1	2	3	4	5	6	
Extremely Important	32.8%	37.0%	23.5%	31.8%	38.7%	40.4%	30.6%
Very Important	21.2%	27.7%	23.4%	30.8%	38.8%	27.3%	26.5%
Moderately Important	37.2%	25.4%	46.1%	29.0%	21.5%	28.8%	36.3%
Not That Important	6.5%	8.8%	6.7%	7.8%	0.7%	2.8%	5.8%
Don't Know	2.2%	1.1%	0.4%	0.6%	0.3%	0.6%	0.7%

Question 015C. How important is it to you that the governor and legislature deal with property tax reform in the next year?

	Region						Total
	1	2	3	4	5	6	
Extremely Important	42.5%	28.7%	32.2%	26.1%	27.1%	35.5%	32.5%
Very Important	28.4%	24.9%	27.7%	26.8%	25.9%	26.4%	27.1%
Moderately Important	22.6%	32.2%	32.2%	32.1%	35.8%	30.0%	31.0%
Not That Important	4.9%	10.2%	6.3%	11.9%	9.0%	4.3%	7.2%
Don't Know	1.7%	4.0%	1.5%	1.9%	0.6%	3.7%	1.9%
Refused	0.0%	0.0%	0.0%	1.2%	1.6%	0.0%	0.3%

17th Annual Idaho Public Policy Survey
Appendix A: Selected Regional Results

Question 015D. How important is it to you that the governor and legislature deal with energy policies in the next year?

	Region						Total
	1	2	3	4	5	6	
Extremely Important	22.6%	23.1%	32.7%	41.3%	24.1%	35.6%	30.9%
Very Important	38.2%	33.6%	30.4%	30.6%	41.4%	28.2%	32.7%
Moderately Important	28.3%	35.7%	31.7%	22.3%	32.4%	29.2%	30.2%
Not That Important	8.3%	4.4%	2.2%	3.9%	0.7%	4.2%	3.5%
Don't Know	2.6%	3.3%	3.0%	0.6%	1.4%	2.8%	2.5%
Refused	0.0%	0.0%	0.0%	1.2%	0.0%	0.0%	0.2%

Question 015E. How important is it to you that the governor and legislature deal with same-sex marriages or civil unions in the next year?

	Region						Total
	1	2	3	4	5	6	
Extremely Important	17.2%	27.6%	13.2%	22.6%	16.7%	35.1%	19.1%
Very Important	8.5%	12.7%	11.5%	13.7%	13.0%	16.0%	12.1%
Moderately Important	23.7%	19.9%	26.7%	13.8%	14.5%	22.2%	22.3%
Not That Important	50.5%	39.2%	48.7%	48.3%	54.8%	24.8%	45.8%
Don't Know	0.6%	0.0%	0.0%	0.4%	0.0%	1.9%	0.4%
Refused	0.0%	0.1%	0.0%	1.2%	1.0%	0.0%	0.3%

17th Annual Idaho Public Policy Survey
Appendix A: Selected Regional Results

Question 015F. How important is it to you that the governor and legislature deal with health care costs in the next year?

	Region						Total
	1	2	3	4	5	6	
Extremely Important	50.3%	39.4%	49.0%	59.8%	38.6%	44.2%	48.0%
Very Important	30.8%	31.8%	35.4%	22.0%	33.2%	27.4%	31.6%
Moderately Important	18.4%	24.2%	13.8%	16.3%	24.3%	22.8%	17.8%
Not That Important	0.0%	4.4%	1.5%	1.9%	3.6%	5.6%	2.3%
Don't Know	0.0%	0.0%	0.4%	0.0%	0.3%	0.0%	0.2%
Refused	0.5%	0.0%	0.0%	0.0%	0.0%	0.0%	0.1%

Question 015G. How important is it to you that the governor and legislature deal with prison overcrowding in the next year?

	Region						Total
	1	2	3	4	5	6	
Extremely Important	16.3%	9.1%	14.9%	16.9%	15.7%	13.6%	14.8%
Very Important	24.1%	25.9%	25.7%	25.4%	38.4%	28.4%	27.2%
Moderately Important	46.9%	46.4%	50.4%	44.2%	35.7%	43.6%	46.4%
Not That Important	9.2%	15.4%	9.0%	11.5%	7.2%	14.4%	10.3%
Don't Know	3.5%	2.5%	0.0%	1.2%	3.0%	0.0%	1.2%
Refused	0.0%	0.1%	0.0%	0.1%	0.0%	0.0%	0.1%

17th Annual Idaho Public Policy Survey
Appendix A: Selected Regional Results

Question 020. In general, do you have the most trust in federal, state, or local government?

	Region						Total
	1	2	3	4	5	6	
Federal	11.1%	19.9%	9.6%	10.9%	10.6%	12.3%	11.2%
State	20.8%	19.4%	30.5%	24.0%	35.2%	21.4%	26.8%
Local	50.1%	45.6%	43.4%	34.6%	28.0%	49.0%	42.5%
All Equal	8.6%	5.7%	7.6%	9.4%	12.3%	4.2%	7.9%
None	9.0%	8.7%	8.0%	19.8%	11.5%	11.2%	10.4%
Don't Know	0.0%	0.0%	0.0%	1.3%	2.3%	1.9%	0.6%
Refused	0.1%	0.7%	0.7%	0.0%	0.0%	0.0%	0.4%

Question 035. Do you consider yourself to be a...?

	Region						Total
	1	2	3	4	5	6	
Democrat	22.9%	22.0%	14.1%	20.7%	12.8%	14.5%	16.7%
Republican	29.2%	33.6%	47.6%	35.0%	44.7%	47.9%	42.0%
Independent	36.8%	32.7%	34.7%	40.4%	37.4%	33.5%	35.7%
Other	5.5%	5.9%	1.5%	0.6%	5.1%	1.9%	2.7%
Don't Know	0.6%	3.7%	0.0%	1.4%	0.0%	2.2%	0.8%
Refused	0.7%	2.0%	2.2%	1.9%	0.0%	0.0%	2.0%

Question 040. In general, would you describe yourself as...?

	Region						Total
	1	2	3	4	5	6	
Very Conservative	21.4%	20.6%	19.3%	23.2%	20.2%	22.4%	20.7%
Somewhat Conservative	29.7%	24.5%	24.9%	24.3%	25.0%	40.9%	27.4%
Middle-of-the-Road	38.6%	31.1%	37.5%	33.6%	35.3%	30.5%	35.6%
Somewhat Liberal	5.8%	16.1%	13.1%	12.0%	9.9%	3.9%	10.7%
Very Liberal	2.6%	5.7%	3.7%	7.0%	8.1%	2.4%	4.4%
Don't Know	0.6%	0.0%	1.5%	0.0%	1.6%	0.0%	0.9%
Refused	1.3%	2.0%	0.0%	0.0%	0.0%	0.0%	0.3%

17th Annual Idaho Public Policy Survey
Appendix A: Selected Regional Results

Question 050. Do you think the amount of local property tax you have to pay in Idaho it too high, about right, or too low?

	Region						Total
	1	2	3	4	5	6	
Too High	52.9%	49.4%	43.2%	51.2%	50.4%	53.8%	48.2%
About Right	41.6%	39.2%	45.8%	41.3%	40.9%	40.3%	42.9%
Too Low	0.0%	2.0%	0.0%	5.6%	1.6%	1.3%	1.2%
Doesn't Own Property	3.9%	5.2%	6.6%	1.9%	4.5%	0.0%	4.5%
Don't Know	1.7%	3.5%	4.4%	0.0%	1.1%	4.6%	3.1%
Refused	0.0%	0.7%	0.0%	0.0%	1.6%	0.0%	0.2%

Question 055. How does the assessed value of your property compare to what you think would be a fair selling price?

	Region						Total
	1	2	3	4	5	6	
Higher	28.1%	11.5%	27.3%	18.9%	17.3%	22.2%	23.4%
About the Same	38.4%	43.1%	35.0%	41.6%	45.5%	57.3%	40.8%
Lower	25.6%	32.1%	25.2%	29.3%	25.6%	12.0%	24.7%
Doesn't Own Property	3.4%	9.8%	8.1%	7.3%	4.8%	2.5%	6.4%
Don't Know	4.5%	3.5%	4.5%	2.9%	6.0%	5.9%	4.5%
Refused	0.0%	0.0%	0.0%	0.0%	0.8%	0.0%	0.1%

17th Annual Idaho Public Policy Survey
Appendix A: Selected Regional Results

Question 060. How strongly would you support a ballot initiative to limit your property taxes to 1% of the assessed value?

	Region						Total
	1	2	3	4	5	6	
Strongly Support	33.5%	24.0%	31.1%	13.8%	25.5%	30.7%	28.1%
Support	29.6%	25.0%	26.2%	33.6%	36.6%	26.8%	28.7%
Neither Support nor Oppose	11.7%	20.4%	26.3%	22.9%	13.0%	22.7%	21.4%
Oppose	12.8%	20.1%	4.7%	18.2%	7.0%	7.2%	9.3%
Strongly Oppose	2.1%	8.5%	2.2%	3.7%	9.0%	6.9%	4.2%
Don't Know	9.3%	1.3%	8.1%	7.9%	8.0%	5.6%	7.4%
Refused	1.0%	0.7%	1.5%	0.0%	0.8%	0.0%	0.9%

Question 065. If the 1% property tax initiative were adopted, how do you think the state should replace the lost revenue?

	Region						Total
	1	2	3	4	5	6	
Increase the Sales Tax	20.5%	29.2%	22.4%	16.7%	18.4%	17.9%	21.0%
Increase the Income Tax	1.6%	6.8%	3.9%	2.7%	4.2%	1.1%	3.3%
Some Other Source	10.4%	13.1%	2.5%	10.9%	11.7%	7.8%	7.1%
Cut Government Spending Rather than Increase Other Taxes	65.0%	48.2%	67.9%	67.0%	62.9%	71.2%	65.8%
Don't Know	2.4%	2.7%	3.2%	2.7%	2.8%	1.9%	2.8%

17th Annual Idaho Public Policy Survey
Appendix A: Selected Regional Results

Question 070. How strongly do you agree that the 50/50 homeowners' exemption should be expanded even though this expansion would mean a shift of tax burden to other properties like commercial, industrial, and agriculture?

	Region						Total
	1	2	3	4	5	6	
Strongly Agree	24.4%	5.6%	19.5%	18.1%	9.8%	17.7%	17.6%
Agree	22.2%	19.4%	18.1%	18.3%	16.5%	23.5%	19.3%
Neither Agree nor Disagree	16.9%	29.8%	31.3%	22.8%	34.6%	22.8%	27.4%
Disagree	23.0%	31.6%	24.9%	22.0%	21.5%	27.0%	24.7%
Strongly Disagree	7.0%	3.0%	1.8%	8.5%	11.1%	5.5%	4.9%
Don't Know	4.9%	9.3%	4.0%	10.3%	4.7%	3.6%	5.4%
Refused	1.5%	1.3%	0.4%	0.0%	1.8%	0.0%	0.7%

Question 075. How strongly do you agree that the initiative process is an appropriate means for making complex tax policy decisions?

	Region						Total
	1	2	3	4	5	6	
Strongly Agree	6.4%	8.7%	9.2%	17.2%	5.3%	7.3%	9.1%
Agree	31.6%	34.0%	33.1%	26.1%	31.8%	27.1%	31.2%
Neither Agree nor Disagree	25.9%	31.4%	28.3%	18.2%	35.9%	23.0%	27.2%
Disagree	16.5%	16.8%	9.2%	15.3%	9.5%	18.3%	12.7%
Strongly Disagree	1.3%	3.2%	1.5%	11.6%	7.8%	5.7%	4.0%
Don't Know	17.2%	5.3%	17.0%	11.5%	9.7%	18.5%	14.8%
Refused	1.0%	0.7%	1.8%	0.0%	0.0%	0.0%	1.0%

17th Annual Idaho Public Policy Survey
Appendix A: Selected Regional Results

Question 080. How strongly do you agree or disagree that schools should be allowed to impose development impact fees?

	Region						Total
	1	2	3	4	5	6	
Strongly Agree	12.6%	7.7%	23.8%	9.8%	6.5%	6.9%	15.3%
Agree	23.4%	25.9%	20.3%	19.9%	15.2%	26.1%	21.3%
Neither Agree nor Disagree	16.5%	15.0%	8.9%	27.4%	24.6%	18.9%	15.7%
Disagree	23.4%	13.0%	20.5%	12.4%	19.0%	25.2%	19.8%
Strongly Disagree	7.4%	8.5%	8.2%	12.6%	12.1%	7.5%	9.0%
Don't Know	14.6%	29.3%	18.0%	17.1%	21.7%	15.4%	18.4%
Refused	2.1%	0.7%	0.4%	0.8%	0.7%	0.0%	0.7%

17th Annual Idaho Public Policy Survey
Appendix A: Selected Regional Results

Question 085. The Idaho prison population is at an all-time high. Do you believe that Idaho should...?

	Region						Total
	1	2	3	4	5	6	
Build and other prison to accommodate these new prisoners	27.9%	19.7%	32.4%	37.5%	32.7%	31.5%	31.3%
Pay to send prisoners out of state	4.9%	4.1%	5.8%	2.5%	2.6%	6.7%	4.9%
Review current sentencing laws and release some prisoners	17.1%	16.4%	21.4%	9.8%	2.9%	17.4%	19.0%
Pursue some other solution to deal with the prison population	46.2%	57.5%	37.8%	47.0%	35.9%	41.6%	42.0%
Don't Know	4.0%	1.7%	2.6%	3.2%	2.2%	2.8%	2.8%
Refused	0.0%	0.7%	0.0%	0.0%	0.0%	0.0%	0.1%

Question 090A. Please rate the desirability of wind generation with 1 being the least desirable and 5 being the most desirable.

	Region						Total
	1	2	3	4	5	6	
1 (least)	4.1%	7.7%	2.2%	4.4%	4.0%	5.6%	3.8%
2	2.1%	5.4%	3.3%	2.0%	1.8%	5.8%	3.3%
3	12.9%	14.1%	15.2%	4.7%	13.0%	17.8%	13.6%
4	21.0%	20.3%	19.9%	14.1%	19.8%	21.2%	19.5%
5 (most)	58.2%	51.8%	59.5%	72.2%	61.5%	47.6%	59.0%
Don't Know	1.7%	0.0%	0.0%	2.6%	0.0%	2.0%	0.8%
Refused	0.0%	0.7%	0.4%	0.0%	0.0%	0.0%	0.1%

17th Annual Idaho Public Policy Survey
Appendix A: Selected Regional Results

Question 090B. Please rate the desirability of solar generation with 1 being the least desirable and 5 being the most desirable.

	Region						Total
	1	2	3	4	5	6	
1 (least)	7.2%	9.2%	2.3%	4.8%	5.7%	8.9%	5.0%
2	2.1%	1.3%	3.0%	0.0%	6.1%	9.7%	3.5%
3	10.7%	15.9%	18.6%	9.8%	13.0%	20.6%	15.8%
4	24.4%	17.5%	27.7%	17.2%	20.9%	19.2%	23.3%
5 (most)	55.0%	55.3%	48.5%	65.7%	53.6%	39.3%	51.5%
Don't Know	0.6%	0.0%	0.0%	2.6%	0.7%	2.3%	0.8%
Refused	0.0%	0.7%	0.0%	0.0%	0.0%	0.0%	0.1%

Question 090C. Please rate the desirability of coal-fired generation with 1 being the least desirable and 5 being the most desirable.

	Region						Total
	1	2	3	4	5	6	
1 (least)	50.4%	33.0%	47.0%	55.9%	26.8%	30.3%	43.2%
2	19.7%	33.0%	25.5%	12.1%	22.4%	19.6%	22.6%
3	19.2%	19.8%	12.3%	13.4%	20.7%	30.1%	17.1%
4	5.7%	10.4%	7.9%	6.2%	21.9%	8.4%	9.2%
5 (most)	4.0%	0.7%	5.1%	9.9%	4.5%	6.9%	5.3%
Don't Know	1.0%	2.6%	2.3%	2.6%	3.7%	4.8%	2.6%
Refused	0.0%	0.7%	0.0%	0.0%	0.0%	0.0%	0.1%

Question 090D. Please rate the desirability of natural gas-fired generation with 1 being the least desirable and 5 being the most desirable.

	Region						Total
	1	2	3	4	5	6	
1 (least)	8.3%	14.7%	8.9%	15.1%	10.6%	10.3%	10.4%
2	21.7%	22.8%	11.8%	25.9%	9.7%	13.9%	15.8%
3	35.5%	32.4%	40.3%	33.5%	34.5%	43.3%	37.9%
4	25.0%	22.3%	26.4%	12.1%	21.8%	17.1%	22.5%
5 (most)	7.8%	7.1%	8.8%	10.9%	19.6%	8.2%	9.9%
Don't Know	1.7%	0.0%	3.7%	2.6%	3.7%	7.2%	3.4%
Refused	0.0%	0.7%	0.0%	0.0%	0.0%	0.0%	0.1%

17th Annual Idaho Public Policy Survey
Appendix A: Selected Regional Results

Question 090F. Please rate the desirability of biomass fuel generation with 1 being the least desirable and 5 being the most desirable.

	Region						Total
	1	2	3	4	5	6	
1 (least)	6.7%	2.0%	7.7%	9.6%	12.9%	8.9%	8.0%
2	17.6%	6.7%	10.6%	10.7%	13.3%	12.3%	11.8%
3	19.3%	29.4%	39.9%	29.5%	16.4%	30.6%	31.1%
4	19.4%	30.6%	19.1%	15.9%	21.8%	20.3%	20.1%
5 (most)	32.2%	28.3%	21.0%	26.4%	32.2%	21.3%	25.1%
Don't Know	4.9%	2.4%	1.8%	7.9%	3.3%	6.5%	3.8%
Refused	0.0%	0.7%	0.0%	0.0%	0.0%	0.0%	0.1%

Question 090G. Please rate the desirability of nuclear generation with 1 being the least desirable and 5 being the most desirable.

	Region						Total
	1	2	3	4	5	6	
1 (least)	35.0%	36.6%	42.2%	42.9%	26.5%	17.0%	36.0%
2	16.0%	15.6%	16.8%	17.8%	8.3%	10.4%	15.0%
3	22.6%	19.7%	9.7%	14.9%	13.9%	15.1%	14.1%
4	4.6%	11.0%	7.4%	9.9%	19.4%	19.8%	10.4%
5 (most)	19.5%	16.4%	20.9%	10.6%	28.2%	35.6%	21.7%
Don't Know	2.3%	0.0%	3.0%	3.8%	3.7%	2.0%	2.7%
Refused	0.0%	0.7%	0.0%	0.0%	0.0%	0.0%	0.1%

Question 090I. Please rate the desirability of geothermal generation with 1 being the least desirable and 5 being the most desirable.

	Region						Total
	1	2	3	4	5	6	
1 (least)	2.6%	5.1%	5.9%	8.5%	6.8%	5.1%	5.7%
2	8.9%	4.5%	3.3%	6.4%	11.9%	16.4%	7.1%
3	27.6%	27.2%	16.9%	18.1%	14.7%	27.4%	20.4%
4	24.6%	21.0%	36.9%	19.3%	23.2%	20.2%	28.2%
5 (most)	25.3%	37.9%	30.9%	41.1%	34.7%	23.5%	31.4%
Don't Know	11.1%	3.7%	6.0%	6.5%	8.7%	7.3%	7.1%
Refused	0.0%	0.7%	0.0%	0.0%	0.0%	0.0%	0.1%

17th Annual Idaho Public Policy Survey
Appendix A: Selected Regional Results

Question 095. County commissioners are the only decision-makers involved in deciding the sites for new power plants. How much do you agree that decision-makers from other state and local entities impacted by the decision should be included?

	Region						Total
	1	2	3	4	5	6	
Strongly Agree	39.2%	25.2%	33.7%	42.5%	29.3%	36.9%	34.8%
Agree	27.6%	39.6%	23.8%	28.3%	30.4%	25.0%	27.0%
Neither Agree nor Disagree	8.6%	9.0%	16.8%	4.5%	12.0%	11.9%	12.4%
Disagree	16.0%	12.5%	12.7%	14.8%	10.0%	16.4%	13.6%
Strongly Disagree	7.5%	11.8%	12.4%	8.7%	16.5%	5.8%	10.8%
Don't Know	1.0%	1.3%	0.7%	1.3%	1.0%	4.0%	1.3%
Refused	0.0%	0.7%	0.0%	0.0%	0.7%	0.0%	0.1%

Question 115. How strongly do you support the breaching of the lower four Snake River dams to restore salmon runs in Idaho?

	Region						Total
	1	2	3	4	5	6	
Strongly Support	13.2%	8.1%	23.6%	23.5%	17.3%	13.1%	18.9%
Support	14.0%	14.3%	16.6%	17.5%	13.5%	21.3%	16.4%
Neither Support nor Oppose	24.9%	12.1%	15.9%	16.4%	25.1%	19.1%	18.4%
Oppose	16.8%	14.9%	14.2%	11.2%	20.1%	16.5%	15.2%
Strongly Oppose	23.6%	50.0%	26.0%	31.4%	17.7%	27.6%	27.5%
Don't Know	5.9%	0.0%	3.0%	0.0%	5.6%	2.3%	3.0%
Refused	1.5%	0.7%	0.7%	0.0%	0.7%	0.0%	0.7%

17th Annual Idaho Public Policy Survey
Appendix A: Selected Regional Results

Question 120. If key concerns over breaching such as lost barging and hydroelectricity were replaced with alternatives at a similar price to the public, how strongly would you support breaching the four lower Snake River dams to restore Idaho salmon runs?

	Region						Total
	1	2	3	4	5	6	
Strongly Support	2.5%	3.1%	1.8%	2.9%	1.8%	2.8%	2.3%
Support	8.9%	7.3%	19.7%	5.9%	12.7%	21.2%	14.6%
Neither Support nor Oppose	3.2%	15.5%	6.4%	4.6%	33.5%	12.7%	10.2%
Oppose	55.3%	37.7%	21.9%	26.2%	17.0%	21.6%	28.3%
Strongly Oppose	30.2%	34.5%	50.2%	60.4%	32.2%	41.6%	44.0%
Don't Know	0.0%	2.0%	0.0%	0.0%	2.8%	0.0%	0.5%

Question 125. If you or a family member need long-term care, such as a nursing home, assisted living or extensive home care, at some time in the future, which of the following do you think will pay for most of the cost?

	Region						Total
	1	2	3	4	5	6	
Private long-term care insurance	11.7%	12.5%	18.5%	12.4%	20.6%	11.3%	15.6%
Employer's health insurance	9.9%	6.4%	7.1%	3.2%	8.5%	1.4%	6.4%
Medicare	24.0%	38.6%	15.4%	21.3%	22.1%	23.5%	20.9%
Medicaid	15.4%	8.3%	14.4%	17.2%	9.0%	24.7%	15.1%
Personal savings	17.0%	20.3%	23.8%	32.7%	21.6%	20.0%	23.0%
Children or other family members	15.4%	7.9%	16.4%	4.4%	12.6%	14.9%	13.5%
None or some other source	1.0%	0.0%	0.7%	3.8%	0.3%	0.0%	0.9%
Don't know	5.6%	3.3%	2.3%	5.0%	5.4%	4.1%	3.7%
Refused	0.0%	2.6%	1.5%	0.0%	0.0%	0.0%	0.9%

17th Annual Idaho Public Policy Survey
Appendix A: Selected Regional Results

Question 135. How strongly do you support an amendment to the Idaho Constitution to ban same-sex marriages?

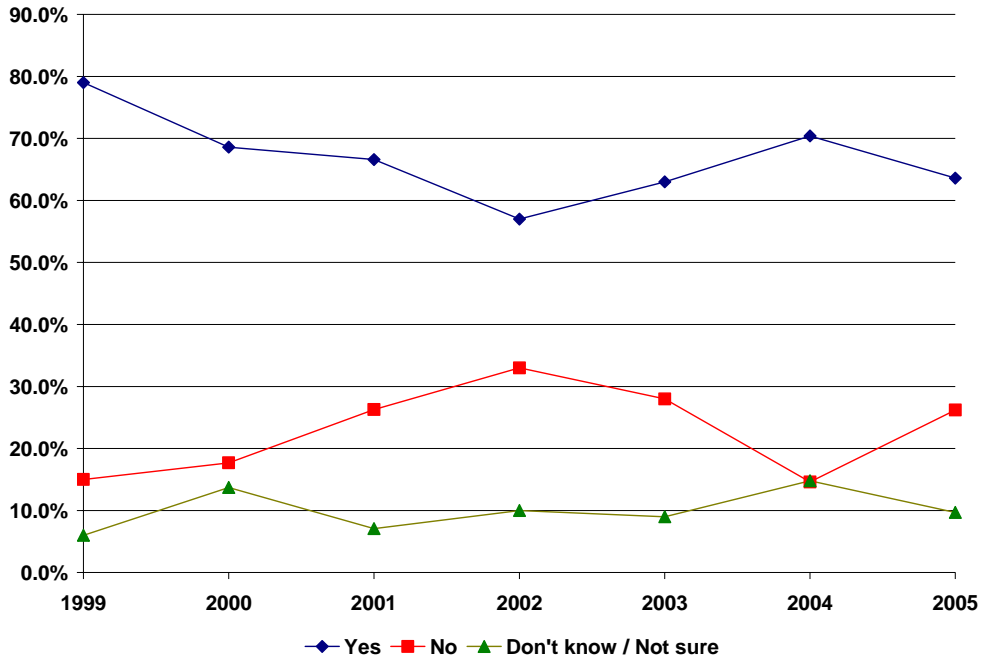
	Region						Total
	1	2	3	4	5	6	
Strongly Support	43.6%	43.1%	32.9%	46.6%	48.6%	66.9%	42.8%
Support	5.3%	8.1%	11.0%	10.9%	4.6%	12.7%	9.5%
Neither Support nor Oppose	11.0%	9.6%	22.4%	15.2%	12.3%	8.1%	16.0%
Oppose	13.1%	16.7%	10.7%	6.6%	10.6%	3.9%	10.2%
Strongly Oppose	25.8%	21.8%	22.7%	20.0%	23.2%	8.4%	21.0%
Don't Know	0.0%	0.0%	0.0%	0.8%	0.0%	0.0%	0.1%
Refused	0.2%	0.1%	0.2%	0.0%	0.7%	0.0%	0.5%

Question 150. How do you feel about citizens armies like the Idaho National Guard being used to fight an overseas war like the war in Iraq?

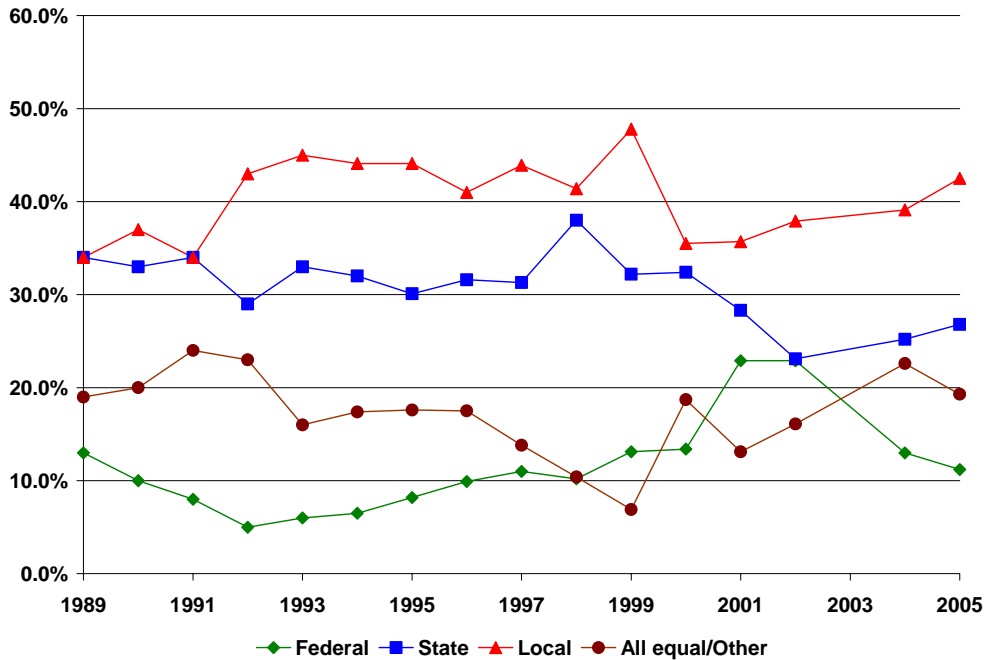
	Region						Total
	1	2	3	4	5	6	
Strongly Favor	24.9%	27.0%	27.2%	24.5%	19.7%	30.2%	26.1%
Favor	27.5%	32.6%	31.9%	27.9%	49.6%	41.2%	33.9%
Somewhat Oppose	17.9%	17.3%	18.0%	19.4%	15.1%	13.3%	17.2%
Strongly Oppose	28.7%	22.5%	21.3%	26.9%	15.2%	14.7%	21.7%
Don't Know	1.0%	0.0%	1.5%	1.2%	0.3%	0.0%	1.0%
Refused	0.0%	0.7%	0.0%	0.0%	0.0%	0.6%	0.1%

Appendix B: Historical Trends

In general terms, do think the state is headed in the right direction?^{‡‡}



In general, do you have the most trust in federal, state, or local government?^{§§}

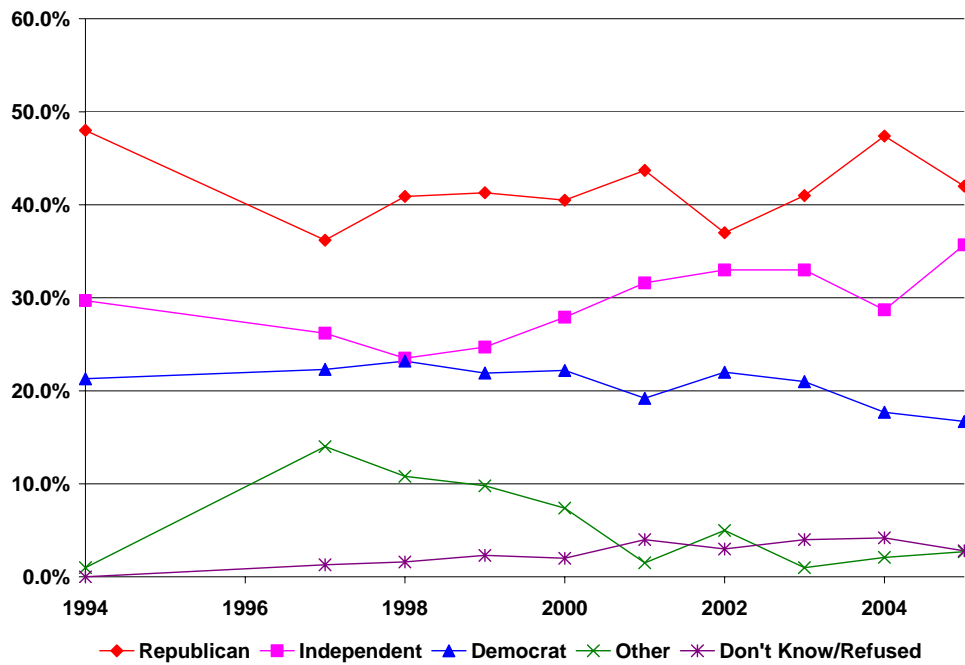


^{‡‡} Years 2002 through 2005 are weighted based on population.

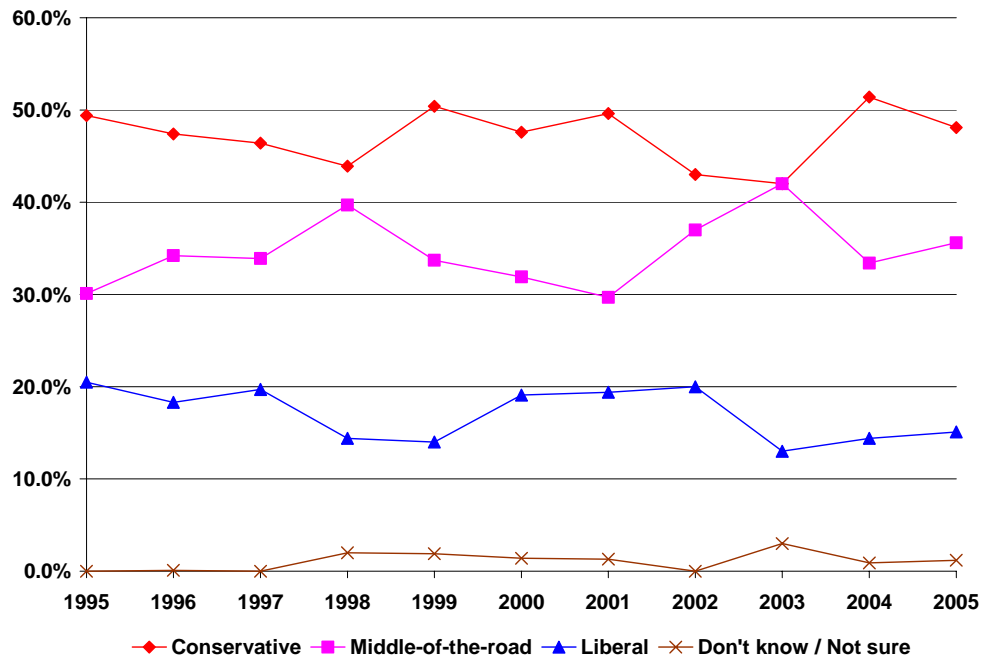
^{§§} Data missing in 2003.

17th Annual Idaho Public Policy Survey
Appendix B: Historical Trends

Do you consider yourself to be a...?***



In general, would you describe yourself as...?



*** Data missing in 1995 and 1996.

Appendix C: Technical Report

17th Annual Idaho Public Policy Survey

**Social Science Research Center
Boise State University**

Technical Report

Presented by:

Clearwater Research, Inc.
1845 South Federal Way
Boise, ID 83705

Contact:

Michael Willmorth
(208) 376-3376 ext. 422
Fax: (208) 376-2008

E-mail: mwillmorth@clearwater-research.com

Amanda Hoffman

(208) 376-3376 ext. 437
Fax: (208) 376-2008

E-mail: ahoffman@clearwater-research.com



CLEARWATER
RESEARCH, Inc.

Contents

Introduction and Background	1
Methods	1
Survey Instrument.....	1
Sampling.....	1
Data Collection.....	2
Data Preparation.....	3
Call Outcomes.....	4
Response Rates.....	4
Appendices	6
A: 17 th Annual Idaho Public Policy Questionnaire.....	6

Tables

Table 1: Final Dispositions.....	4
Table 2: AAPOR Response Rate Formula Categories.....	5

Introduction and Background

The BSU Social Science Research Center (SSRC) sponsors the Idaho Public Policy Survey (IPPS) annually. The SSRC contracted with Clearwater Research, Inc., (Clearwater) to conduct the 17th Annual IPPS in late 2005. Clearwater provided sample design, questionnaire consultation, data collection, and data table production services. The survey design and implementation followed computer-assisted telephone interview (CATI) protocols Clearwater has used successfully for past IPPS projects.

Methods

The SSRC provided Clearwater with the overall specifications of the 2005 IPPS project and with a set of questions to be included on the survey instrument. Clearwater consulted on the final questionnaire and sample design. We conducted telephone interviews with over 500 randomly selected adults residing in the Idaho using a random-digit-dialing (RDD) method.

Survey Instrument

The SSRC provided Clearwater with the core questions for the 2005 IPPS questionnaire. Some items had been asked on earlier IPPS surveys of Idahoans and others were developed for the 2005 study. Clearwater consulted with the SSRC to finalize the CATI version of the survey instrument.

The omnibus questionnaire covered a variety of areas, including core policy survey items, opinions on taxes, education, water rights, and other issues to be considered by the Idaho legislature in 2006. It also included demographic questions such as education level, age, income, and political party affiliation. During the first few days of data collection, minor adjustments were made to the question wording and response categories based on feedback from interviewers and survey respondents. The final questionnaire is presented in Appendix A.

The programming of the questionnaire included checks for out-of-range and improbable values and for consistency in responses across questions as questions were answered. These checks brought invalid or questionable answers to the attention of the interviewer for corrective action as a respondent was interviewed. In testing the programming, Clearwater checked the CATI questionnaire with mock data to ensure appropriate skip patterns were followed. The survey was conducted in English only. The average interview length was 14.4 minutes.

Sampling

For the 2005 IPPS, a random-digit-dialing (RDD) method was used to sample a minimum of 500 Idaho adults. The RDD sample frame consisted of all telephone numbers in one-plus working banks with exchanges serving Idaho households. A bank is a series of 100 telephone numbers ending with 01 through 99 that start with the same area code, exchange, and first two digits of the line number. A one-plus bank contains a telephone number listed in a residential directory and is therefore likely to include telephone numbers that ring at residential households.

The sample was stratified by region—six county groupings corresponding to the six districts of the Idaho Association of Counties. Independent samples were drawn for each region so the total number of completed interviews in each could be controlled during data collection. The

stratification was disproportionate, such that an equal number of interviews was completed in each region (a minimum of 83).

Clearwater estimated the necessary number of RDD records to generate for each region in order to achieve the required number of completed interviews. The generated sample records were divided into random subsamples of 50 records for processing. Replication provides a means of ensuring that the minimum number of records are called to achieve the desired number of completed interviews.

The records were processed by Marketing Systems Group (MSG) using their GENESYS-CSS (Comprehensive Sample Screening) service. The process identifies a large percentage of business, nonworking, and cell phone numbers that are drawn in RDD samples. Records identified through the CSS process as nonresidential lines were not called. Rather, they were sequestered and added to the calculation of final dispositions and response rates. All remaining RDD telephone numbers were called.

Once an interviewer made voice contact with a household, he or she verified the number reached and that the number was for a private residence. One adult member of the household was randomly selected to be interviewed using a most-recent-birthday method.

Data Collection

Clearwater collected data using its in-house 110-station CATI system. Data collection ran from November 3 through December 4, 2005.

Interviewers were thoroughly briefed prior to data collection and rehearsed the questionnaire before conducting actual interviews. Monitoring staff listened to a sampling of interviews throughout the fielding period to maintain data quality. Clearwater used computer-aided dialing, *but not predictive dialing*. Predictive dialing has the potential to annoy respondents by introducing a delay in connections after respondents answer the telephone. This delay leads to higher hang-up and refusal rates and a correspondingly lower response rate for the survey.

Calling protocols followed good practices for general population surveys sampled with RDD. We resolved each sample record by attempting the number ten times during the calling period or until a final disposition code (such as “completed interview” or “disconnected/non-working number”) was assigned. The calling protocols required that the ten attempts occur on no fewer than five calling occasions—each consisting of no more than three attempts at least one hour apart. Further, the 10 attempts should involve at least three weekday calls, three weeknight calls, and three weekend calls. The calling periods for data collection were 8:30 A.M. to 5:00 P.M. weekdays, 5:00 P.M. to 9:00 P.M. weeknights, 10 A.M. to 7:30 P.M. Saturdays, and 1 P.M. to 9:00 P.M. Sundays (Mountain Standard Time).

The calling protocol required respondents or potential respondents who initially refused to participate or who terminated the interview after beginning it be contacted again in an attempt to convert them to a participating respondent. The initial refusal could occur either at the household level (before a respondent had been selected) or at the respondent level (after a respondent had been selected and the selected respondent had refused).

The number of completed interviews being collected in each region during fielding was monitored. As needed, sample replicates were added to or removed from the pool of records being called by interviewers via the CATI system.

During fielding, the survey data were entered and automatically consolidated by the CATI software as interviewers completed each questionnaire with a respondent. During fielding, interviewers and supervisors used project feedback and data change forms to document and communicate data collection errors or problems to the production manager in the data collection department. Data changes were effected by the production manager using the CATI data editor. If a data change affected a skip pattern later in the questionnaire, the respondent was called back to collect the missing data.

The productivity of the sample was sufficient to achieve the minimum 500 completed interviews using 5,154 RDD telephone numbers. Clearwater Research completed 534 interviews—34 (6.8%) more than the required minimum—for the 2005 IPPS.

Data Preparation

Calling on the RDD sample was considered complete at the point all records in a replicates had reached their maximum attempts or a final disposition had been assigned. We exported the data from CATI, cleaned, and compiled them into a labeled SPSS data file. The data files included data from all completed interviews in the replicates used.

Clearwater checked the prepared data for out-of-range and improbable values and for consistency in responses across questions and appropriate skip patterns. Data cleaning included editing open-ended responses to ensure correctness and consistency in spelling, capitalization, and punctuation. Open-ended responses in “other” categories were further cleaned by coding them into existing categories when they were duplicative of existing categories. The SSRC worked with Clearwater to finalize the coding schemes and the correct code assignments. Confidentiality of the data was ensured by removing any information—such as the telephone number—that could identify a specific household that participated in the study.

Clearwater calculated the final disposition for each sample record. The CATI call history tables recorded the interim or final disposition entered by the interviewer for each call attempt. Database programming referenced both the CATI call history tables and the data sets to determine the correct final disposition.

Finally, the data were weighted to account for the sample design and to reduce the effect of unit nonresponse. The list-assisted RDD design yields a complex probability sample. Probabilities vary by the number of phone lines that serve the household and by the number of adults that live in the household. Case weights were calculated in part to account for these varying probabilities of selection. In addition, we used a post-stratification factor in the case weighting to help minimize bias due to nonresponse patterns (refusals and noncontacts). The population estimates used for poststratification were county-level estimates by age and gender for July 1, 2003, published by the U.S. Census.

We calculated two weights for each case. The first (WTEXP) was an expansion weight for projecting to population counts and for correct variance estimation using specialized statistical analysis software, such as SUDAAN. The second (WTREL) was a relative weight, which can be used for approximating correct variance estimates using standard statistical analysis software

with simple random sample assumptions, such as SPSS. The final tables produced by Clearwater for the 2005 IPPS contain results generated with SUDAAN using the expansion weight.

Call Outcomes

Each call attempt was given an interim disposition depending on the outcome of the call. At the end of the field period, each record was assigned a final disposition for the study based on the history of interim dispositions for that case. The final disposition counts for the 2005 IPPS project—based on the disposition set developed by the American Association for Public Opinion Research (AAPOR) for CATI studies—is shown in Table 1.

Table 1: Final Dispositions

Final Disposition	Region 1	Region 2	Region 3	Region 4	Region 5	Region 6	Total
Interview (Category 1)							
Complete	89	87	91	83	95	93	538
Total Category 1	89	87	91	83	95	93	538 ^{††}
Eligible, non-interview (Category 2)							
Household-level refusal	0	0	1	0	2	0	3
Known-respondent refusal	26	21	26	18	18	21	130
Break off	13	4	5	14	7	8	51
Total Category 2	39	25	32	32	27	29	184
Unknown eligibility, non-interview (Cat. 3)							
Unknown if housing unit	89	91	122	112	89	100	603
Always busy	2	2	3	1	1	2	11
No answer	35	24	27	42	28	15	171
Answering machine-don't know if household	31	17	43	23	13	22	149
Call blocking	2	2	0	2	0	1	7
Housing unit, unknown if eligible respondent	0	0	1	0	0	0	1
Total Category 3	159	136	196	180	131	140	942
Not eligible (Category 4)							
Out of sample	0	0	0	0	0	1	1
Fax/data line	35	20	33	32	20	27	167
Non-working number	518	437	370	493	363	450	2631
Cell phone	2	3	7	1	1	3	17
Nonresidence	107	92	119	124	111	105	658
No eligible respondent	1	0	2	5	2	2	12
Total Category 4	663	552	531	655	497	588	3486
Grand Total	950	800	850	950	750	850	5150

Response Rates

For the 2005 IPPS project, we use the method of response rate calculation codified by the American Association for Public Opinion Research (AAPOR).^{†††} Specifically, we calculated AAPOR Response Rate 4 (RR4). This rate reflects the percentage of completed and partially

^{†††} Four records were removed from the weighted dataset due to missing data required for weighting.

^{†††} The American Association for Public Opinion Research. 2004. *Standard Definitions: Final Dispositions of Case Codes and Outcome Rates for Surveys*. 3rd edition. Lenexa, Kansas: AAPOR.

completed interviews achieved after fully processing all attempted sample records in worked replicates according to the prescribed sample management rules. It also estimates the number of eligible households from the total number of phone numbers of unknown status.

To calculate RR4, the IPPS final dispositions are summarized into seven categories, shown in Table 2.

Table 2: AAPOR Response Rate Formula Categories

Symbol	Description	Region	Region	Region	Region	Region	Region	Total
		1	2	3	4	5	6	
I	Complete interviews	89	87	91	83	95	93	538 ^{§§§}
P	Partial interviews	0	0	0	0	0	0	0
R	Refusal or break off	39	25	32	32	27	29	184
NC	Non-contact	0	0	0	0	0	0	0
O	Other	0	0	0	0	0	0	0
UH	Unknown if household	159	136	195	180	131	140	941
UO	Unknown other	0	0	0	0	0	0	0
RR4	AAPOR Responses Rate #4 (unweighted)	0.579	0.645	0.569	0.585	0.643	0.637	0.609

The formula for RR4 is:

$$RR4 = I / ((I) + (R + NC + O) + e(UH + UO))$$

For this calculation, we set the value of e to the proportion of known households in the group of sample records whose eligibility status was able to be determined. For most RDD surveys, this is a conservative estimate of e.

^{§§§} Four records were excluded from the final dataset due to missing data required for weighting.

Appendices

A: 17th Annual Idaho Public Policy Questionnaire

INTRO

Hello, my name is _____. I am calling on behalf of the Social Science Research Center at Boise State University. This is not a sales call.

We are conducting a brief 10-minute survey to find out how the people of Idaho feel about issues that affect the state. This study is very important because it will be a resource for Idaho policy-makers.

I need to speak to the adult 18 years or older who lives in your household and who has had the most recent birthday. Are you the adult with the most recent birthday in your household?

- 1 YES (**SKIP TO INSTATE**)
- 2 NO (**CONTINUE WITH GETNEWAD**)

IF NECESSARY, USE FALLBACK STATEMENT TO EXPLAIN MOST RECENT BIRTHDAY SELECTION

GETNEWAD - IF INTRO1 = 2

May I speak with the adult with the most recent birthday?

- 1 YES, SELECTED RESPONDENT COMING TO THE PHONE (**CONTINUE WITH INTRO2**)
- 2 NO, NOT AVAILABLE NOW (**SCHEDULE A CALLBACK**)

INTRO2 - IF INTRO1 = 2 AND GETNEWAD = 1

Hello, my name is _____. I am calling on behalf of the Social Science Research Center at Boise State University. This is not a sales call.

We are conducting a brief 10-minute survey to find out how the people of Idaho feel about important issues that affect the state. This study is very important because it will be a resource for Idaho policy-makers.

I need to speak to the adult 18 years or older who lives in your household and who has had the most recent birthday. Are you the adult with the most recent birthday in your household?

- 1 YES
- 2 NO, SELECTED RESPONDENT COMING TO THE PHONE (**REPEAT INTRO2**)
- 3 NO, NOT AVAILABLE (**SCHEDULE A CALLBACK**)

INSTATE

Your participation in this survey is completely voluntary and all of your answers will be kept entirely confidential.

First, I need to make sure I've reached a household in Idaho. Is this household in Idaho?

- 1 YES (**CONTINUE WITH COUNTYQ**)
- 2 NO, NOT IN IDAHO (**SKIP TO SORRY**)
- 3 NOT A PRIVATE RESIDENCE (**SKIP TO SORRY**)

SORRY - GET IF INSTATE = 2

I'm sorry, but for this study we need to speak with people who live in private households in Idaho. Thank you for your time, and have a nice <day>/<evening>.

TERMINATE THE CALL AS NOT A PRIVATE RESIDENCE OR NOT IN STUDY AREA

COUNTYQ

In what Idaho county is your residence located?

SELECT FROM LIST OF IDAHO COUNTIES

001. ADA	031. CASSIA	061. LEWIS
003. ADAMS	033. CLARK	063. LINCOLN
005. BANNOCK	035. CLEARWATER	065. MADISON
007. BEAR LAKE	037. CUSTER	067. MINIDOKA
009. BENEWAH	039. ELMORE	069. NEZ PERCE
011. BINGHAM	041. FRANKLIN	071. ONEIDA
013. BLAINE	043. FREMONT	073. OWYHEE
015. BOISE	045. GEM	075. PAYETTE
017. BONNER	047. GOODING	077. POWER
019. BONNEVILLE	049. IDAHO	079. SHOSHONE
021. BOUNDARY	051. JEFFERSON	081. TETON
023. BUTTE	053. JEROME	083. TWIN FALLS
025. CAMAS	055. KOOTENAI	085. VALLEY
027. CANYON	057. LATAH	087. WASHINGTON
029. CARIBOU	059. LEMHI	

777 DON'T KNOW

999 REFUSED

General

Q005

In general terms, do you think the state is headed in the right direction?

- 1 YES
- 2 NO

- 7 DON'T KNOW/NOT SURE
- 9 REFUSED

Q010

In your opinion what is the single MOST important issue facing Idaho today?

- _____
- 77 DON'T KNOW/NOT SURE
 - 99 REFUSED

Q015

How important is it to you that the governor and legislature deal with each of the following issues in the next year? Is it extremely important, very important, moderately important, or not that important?

	Extremely Important	Moderately Important	Not That Important	Don't Know	Re- fused
a Public School funding	1	2	3	7	9
b Higher Education funding	1	2	3	7	9
c Property Tax Reform	1	2	3	7	9
d Energy Policies	1	2	3	7	9
e Same-sex marriages or civil unions	1	2	3	7	9
f Health care costs	1	2	3	7	9
g Prison overcrowding	1	2	3	7	9

PROGRAMMING NOTE: ROTATE ITEMS

Q020

(Q020 in 2004)

In general, do you have the most trust in federal, state, or local government?

1. FEDERAL
2. STATE
3. LOCAL
4. ALL EQUAL
5. NONE

7. DON'T KNOW
9. REFUSED

Q025

Which level of government do you think best responds to your needs?

READ IF NECESSARY:

1. FEDERAL
2. STATE
3. LOCAL
4. ALL EQUAL
5. NONE

7. DON'T KNOW
9. REFUSED

Q030

From which level of government do you think you get the most for your tax money?

READ IF NECESSARY:

1. FEDERAL
2. STATE
3. LOCAL
4. ALL EQUAL
5. NONE

7. DON'T KNOW
9. REFUSED

Political

Q035

(Q045 in 2004)

Do you consider yourself to be a...

- 1 Democrat
- 2 Republican
- 3 Independent
- 4 OTHER (SPECIFY)

- 7 DON'T KNOW/NOT SURE
- 9 REFUSED

Q040

(Q050 in 2004)

In general, would you describe yourself as...

- 1 Very conservative
- 2 Somewhat conservative
- 3 Middle-of-the-road
- 4 Somewhat liberal
- 5 Very liberal

- 7 DON'T KNOW/NOT SURE
- 9 REFUSED

Taxes

Q045

(Q065 in 2004)

The next questions are about taxes.

Which of the following taxes do you think is the least fair? Would you say...

- 1 Federal income tax
- 2 State income tax
- 3 State sales tax
- 4 Local property tax
- 5 Social security payroll tax
- 6 All are equally unfair
- 8 None

- 7 DON'T KNOW/NOT SURE
- 9 REFUSED

Q050

(Q075 in 2004)

Do you think the amount of local property tax you have to pay in Idaho is too high, about right or too low?

- 1 TOO HIGH
- 2 ABOUT RIGHT
- 3 TOO LOW

- 7 DON'T KNOW/NOT SURE
- 9 REFUSED

Q055

How does the assessed value of your property compare to what you think would be a fair selling price? Is it...

- 1 Higher
- 2 About the Same
- 3 Lower

- 7 DON'T KNOW/NOT SURE
- 9 REFUSED

Q060

How strongly would you support a ballot initiative to limit your property taxes to 1% of the assessed value? Would you...

- 1 Strongly support
- 2 Support
- 3 Neither support nor oppose (**SKIP TO Q070**)
- 4 Oppose (**SKIP TO Q070**)
- 5 Strongly Oppose (**SKIP TO Q070**)

- 7 DON'T KNOW/NOT SURE (**SKIP TO Q070**)
- 9 REFUSED (**SKIP TO Q070**)

Q065 (IF Q060=1 OR 2)

If the 1% property tax initiative were adopted, how do you think the state should replace the lost revenue?

- 1 Increase the sales tax
- 2 Increase the income tax
- 3 Some other source (SPECIFY:_____)
- 4 Cut government spending rather than increase other taxes

- 7 DON'T KNOW/NOT SURE
- 9 REFUSED

INTERVIEWER: IF WON'T PICK JUST ONE, USE 3 (OTHER) AND SPECIFY

Q070

How strongly do you agree that the 50/50 homeowners' exemption should be expanded even though this expansion will mean a shift of tax burden to other properties like commercial, industrial and agriculture? Would you say you...

- 1 Strongly agree
- 2 Agree
- 3 Neither agree nor disagree
- 4 Disagree
- 5 Strongly disagree

- 7 DON'T KNOW/NOT SURE
- 9 REFUSED

Q075

How strongly do you agree that the initiative process is an appropriate means for making complex tax policy decisions? Would you say you...

- 1 Strongly agree
- 2 Agree
- 3 Neither agree nor disagree
- 4 Disagree
- 5 Strongly disagree

- 7 DON'T KNOW/NOT SURE
- 9 REFUSED

Economy

Q080

How strongly do you agree or disagree that schools should be allowed to impose development impact fees? Would you say you...

- 1 Strongly agree
- 2 Agree
- 3 Neither agree nor disagree
- 4 Disagree
- 5 Strongly disagree

- 7 DON'T KNOW/NOT SURE
- 9 REFUSED

Corrections

Q085

The Idaho prison population is at an all-time high. Do you believe that..

- 1 Idaho should build another prison to accommodate these new prisoners
 - 2 Idaho should pay to send prisoners out of state
 - 3 Idaho should review current sentencing laws and release some prisoners
 - 4 Idaho should pursue some other solution to deal with the prison population
-
- 7 DON'T KNOW/NOT SURE
 - 9 REFUSED

Energy and Environmental Issues

Q090

The next questions are about energy and environmental issues.

Please rate the desirability of the following sources of electricity generation with 1 being the least desirable and 5 being the most desirable.

	Least Desirable			Most Desirable		Don't Know	Refused
a Wind generation	1	2	3	4	5	7	9
b Solar generation	1	2	3	4	5	7	9
c Coal-fired generation	1	2	3	4	5	7	9
d Natural gas-fired generation	1	2	3	4	5	7	9
e Oil-fired generation	1	2	3	4	5	7	9
f Bio-mass fuel generation	1	2	3	4	5	7	9
(INTERVIEWER NOTE: methane produced from digesting agricultural and forest product waste)							
g Nuclear generation	1	2	3	4	5	7	9
h Hydro-power generation	1	2	3	4	5	7	9
i Geo-thermal generation	1	2	3	4	5	7	9

PROGRAMMING NOTE: ROTATE ITEMS

Q095

County Commissioners are the only decision-makers involved in deciding the sites for new power plants. How much do you agree that decision-makers from other state and local entities impacted by the decision should be included? Would you...

- 1. Strongly agree
- 2. Agree
- 3. Neither agree nor disagree
- 4. Disagree
- 5. Strongly disagree

- 7 DON'T KNOW/NOT SURE
- 9 REFUSED

Q100

How much do you support paying a slightly higher electric utility rate to encourage the development of small renewable power generation facilities such as wind power generation in the state of Idaho? Would you say you...

1. Strongly support
 2. Support
 3. Neither support of oppose
 4. Oppose
 5. Strongly oppose
-
- 7 DON'T KNOW/NOT SURE
 - 9 REFUSED

Q115

How strongly do you support the breaching of the lower four Snake River dams to restore salmon runs in Idaho? Would you say you...

- 1 Strongly support (**SKIP TO Q125**)
 - 2 Support (**SKIP TO Q125**)
 - 3 Neither support nor oppose (**SKIP TO Q125**)
 - 4 Oppose
 - 5 Strongly Oppose
-
- 7 DON'T KNOW/NOT SURE (**SKIP TO Q125**)
 - 9 REFUSED (**SKIP TO Q125**)

Q120 - IF Q115 = 4 OR 5

If key concerns over breaching such as lost barging and hydroelectricity were replaced with alternatives at a similar price to the public, how strongly would you support breaching the four lower Snake River dams to restore Idaho salmon runs? Would you...

- 1 Strongly support
 - 2 Support
 - 3 Neither support nor oppose
 - 4 Oppose
 - 5 Strongly Oppose
-
- 7 DON'T KNOW/NOT SURE
 - 9 REFUSED

Healthcare

Q125

If you or a family member need long-term care, such as a nursing home, assisted living or extensive home care, at some time in the future, which of the following do you think will pay for most of the cost?

- 11 Private long-term care insurance
- 12 Employer's health insurance
- 13 Medicare
- 14 Medicaid
- 15 Personal savings
- 16 Children or other family members

17 NONE OF THE ABOVE (DO NOT READ, RESPONDENT VOLUNTEERED ONLY)

18 OTHER (SPECIFY: _____)(DO NOT READ, RESPONDENT VOLUNTEERED ONLY)

(IF MORE THAN ONE PROBE: ASK RESPONDENT WHICH OF THE ABOVE WOULD PAY MORE)

77 DON'T KNOW

99 REFUSED

Q130

How much do you estimate a nursing home in Idaho costs for one month? Would you say...

- 1 under \$500
- 2 \$500 or more, but under \$1,000
- 3 \$1,000 or more, but under \$2,000
- 4 \$2,000 or more, but under \$3,000
- 5 \$3,000 or more, but under \$4,000
- 6 \$4,000 or more

7 DON'T KNOW/NOT SURE

9 REFUSED

Miscellaneous Issues

Q135

We are getting close to the end of the interview. The next few questions are about a variety of issues in Idaho.

How strongly do you support an amendment to the Idaho Constitution to ban same-sex marriages? Do you...

- 1 Strongly support
- 2 Support
- 3 Neither support nor oppose
- 4 Oppose
- 5 Strongly Oppose

- 7 DON'T KNOW/NOT SURE
- 9 REFUSED

Q140

Overall, how important are libraries in our state? Would you say...

- 1 Very important
- 2 Somewhat important
- 3 Not very important
- 4 Not important at all

- 7 DON'T KNOW/NOT SURE
- 9 REFUSED

Q145

How familiar are you with the Libraries Linking Idaho (LiLI) databases? Would you say...

- 1 Very familiar
- 2 Somewhat familiar
- 3 Not very familiar
- 4 Not at all familiar

- 7 DON'T KNOW/NOT SURE
- 9 REFUSED

Q150

How do you feel about citizen armies like the Idaho National Guard being used to fight an overseas war like the war in Iraq? Do you...

- 1 Strongly favor
- 2 Somewhat favor
- 3 Somewhat oppose
- 4 Strongly oppose

- 7 DON'T KNOW/NOT SURE
- 9 REFUSED

Demographics

Q155

(Q205 in 2004)

Finally, I have some background questions that will be used for statistical purposes only.

How many members of your household, including yourself, are 18 years of age or older?

_____ ENTER THE NUMBER OF ADULTS

- 20 20 OR MORE
- 77 DON'T KNOW/NOT SURE
- 99 REFUSED

Q160

(Q210 in 2004)

Do you have more than one telephone number in your household? Do not include cell phones or numbers that are only used by a computer or fax machine.

- 1 YES
- 2 NO (SKIP TO Q170)

- 7 DON'T KNOW / NOT SURE (SKIP TO Q170)
- 9 REFUSED (SKIP TO Q170)

Q165 - IF Q160 = 1

(Q211 in 2004)

How many of these phone numbers are residential numbers?

- 1 ONE
- 2 TWO
- 3 THREE
- 4 FOUR
- 5 FIVE
- 6 SIX OR MORE

- 7 DON'T KNOW / NOT SURE
- 9 REFUSED

Q170

(Q215 in 2004)

CODE SEX OF RESPONDENT. IF NECESSARY, ASK:

This may sound silly, but for survey purposes I need to ask, are you male or female?

- 1 MALE
- 2 FEMALE

- 7 DON'T KNOW/NOT SURE
- 9 REFUSED

Q175

Please tell me which of the following racial or ethnic group or groups best describe you?

- 11 American Indian or Alaskan Native
- 22 Asian
- 33 Black or African American
- 44 Hispanic or Latino
- 55 White
- 66 OTHER (SPECIFY)

- 77 DON'T KNOW/NOT SURE
- 99 REFUSED

NOTE: IF MORE THAN ONE GROUP, USE 66 (OTHER) AND SPECIFY GROUPS.

Q180

(Q225 in 2004)

What is your current marital status?

- 1 SINGLE, NEVER MARRIED
- 2 MARRIED
- 3 DIVORCED
- 4 SEPARATED
- 5 WIDOWED

- 9 REFUSED

Q185

(Q230 in 2004)

What is your age?

_____ ENTER AGE (18-110) (**SKIP TO Q195**)

777 DON'T KNOW/NOT SURE (**GO TO Q190**)

999 REFUSED (**GO TO Q190**)

Q190 - IF Q230 = 777 OR 999

(Q230B in 2004)

I understand this is a sensitive question. Would you be willing to tell me which of the following best describes your age range?

READ CHOICES

- 1 Under 30
- 2 30 to 44
- 3 45 to 64
- 4 65 or older

7 I DO NOT KNOW / I DO NOT UNDERSTAND

9 REFUSED

Q195

(Q235 in 2004)

How many years have you lived in Idaho?

INTERVIEWER NOTE: IF LESS THAN ONE YEAR CODE AS "0" (ZERO)

_____ ENTER NUMBER OF YEARS (0-110) - *VERIFY IF GREATER THAN AGE*

777 DON'T KNOW/NOT SURE

999 REFUSED

Q200

(Q250 in 2004)

What is the highest level of school or college that you have completed?

INTERVIEWER: READ ONLY IF NECESSARY

- 21 Less than high school
- 22 High school graduate or GED
- 23 2-year or associate degree
- 24 Some college but less than 4 years
- 25 Trade or vocational certificate
- 26 4-year college graduate (Bachelor's or 4 year degree)
- 27 Some graduate school
- 28 Master's degree
- 29 Doctorate or professional degree (PHD, MD, JD)
- 30 Or something else (SPECIFY)

- 77 DON'T KNOW/NOT SURE
- 99 REFUSED

Q205

(Q255 in 2004)

I'm going to quickly read a list of income ranges in order from lowest to highest. Please stop me when I get to the one that describes your annual household income from all sources.

- 01 Less than \$10,000
- 02 \$10,000 up to \$20,000
- 03 \$20,000 up to \$30,000
- 04 \$30,000 up to \$40,000
- 05 \$40,000 up to \$50,000
- 06 \$50,000 up to \$60,000
- 07 \$60,000 up to \$70,000
- 08 \$70,000 up to \$80,000
- 09 \$80,000 up to \$90,000
- 10 \$90,000 up to \$100,000
- 11 More than \$100,000

- 77 DON'T KNOW/NOT SURE
- 99 REFUSED

GOODBYE

Those are all my questions. Thank you very much for taking the time to participate in this survey.

TERMINATE THE CALL AS COMPLETED INTERVIEW